



# SHENZHEN LEAD OPTO-TECHNOLOGY CO.,LTD

Add:No.26 building,Putian Road,Bainikeng,Pinghu Town,Shenzhen City,China

Contact Lead: Tel +86-755-8466 0522; 8969 0533 Fax +86-755-8466 0122

Website:www.lead-lighting.com Expire date:2012-12-31

## LED Panel Light Series (Side Emitting LED)

### Product Features

- 1.High brightness and Longlifetime, can reach 50000hs
- 2.Energy-Saving and environment used,Only 18W can replace 60W
- 3.New inner high efficiency With heat protection system, the constant current driver can work under unstable voltage.
- 4.Best thermal emitting with aluminum alloy as housing
- 5.No flickering & interference, instant soft start
- 6.Environment Friendly: No UV,IR radiation,No Mercury, No pollution of the environment

### Illuminant parameters

Led type:Lumenmax SMD3014  
 Color temperaturer: White,Warm white(2800K-7500 K)  
 Beam Angle:>120°  
 Power factor (PF) :≥0.95 Power efficiency:≥85%  
 Frequency (Hz) :47 to 63Hz, Color index (CRI) :≥80Ra  
 Material: Aluminum body and Pc cover  
 Warranty: 2 years  
 LED life span: 50,000 hours



**LUMENMAX**

— LED SMD 3014







MITSUBISHI

— Light Guide Plate



High Lumen LED, MITSUBISHI light guide plate, No shadow; High strength aluminium, no distort.

Model	Real Size(mm)	Power (W)	Lumen (lm)	LED Qty (SMD3014)	Input Voltage(V)	Price (AC85-265V)	Dimmable Price (110/220V±20V, Including controllers)
LD-PL-3030-CL1-12W	 295*295*10.5 (3030)	12W	960	110pcs	AC85-265V	\$26.1	\$43.2
LD-PL-3030-CL1-18W		18W	1440	176pcs	AC85-265V	\$30.8	\$46.7
LD-PL-3030-CL1-24W		24W	1920	220pcs	AC85-265V	\$34.5	\$52.5
LD-PL-3030-CL1-36W		36W	2880	352pcs	AC85-265V	\$43.5	\$61.2
LD-PL-3060-CL1-18W	 295*595*10.5 (3060)	18W	1440	176pcs	AC85-265V	\$42.5	\$59.2
LD-PL-3060-CL1-27W		27W	2160	260pcs	AC85-265V	\$48.8	\$67.5
LD-PL-3060-CL1-30W		30W	2400	280pcs	AC85-265V	\$50.0	\$68.3
LD-PL-3060-CL1-36W		36W	2880	352pcs	AC85-265V	\$56.4	\$74.6
LD-PL-6060-CL1-27W		27W	2160	260pcs	AC85-265V	\$62.9	\$79.0
LD-PL-6060-CL1-30W		30W	2400	280pcs	AC85-265V	\$64.0	\$80.6
LD-PL-6060-CL1-36W		36W	2880	352pcs	AC85-265V	\$70.0	\$81.7
LD-PL-6060-CL1-48W		48W	3840	462pcs	AC85-265V	\$75.8	\$92.5

LD-PL-6060-CL1-54W	595*595*10.5 (6060)	54W	4320	520pcs	AC85-265V	<b>\$79.0</b>	<b>\$102.9</b>
LD-PL-6060-CL1-60W		60W	4800	560pcs	AC85-265V	<b>\$80.6</b>	<b>\$104.5</b>
LD-PL-6060-CL1-72W		72W	5760	704pcs	AC85-265V	<b>\$91.7</b>	<b>\$117.0</b>
LD-PL-30120-CL1-27W		27W	2160	260pcs	AC85-265V	<b>\$66.1</b>	<b>\$84.5</b>
LD-PL-30120-CL1-30W		30W	2400	280pcs	AC85-265V	<b>\$67.7</b>	<b>\$85.3</b>
LD-PL-30120-CL1-36W		36W	2880	352pcs	AC85-265V	<b>\$73.5</b>	<b>\$91.5</b>
LD-PL-30120-CL1-48W		48W	3840	462pcs	AC85-265V	<b>\$80.0</b>	<b>\$96.7</b>
LD-PL-30120-CL1-54W		54W	4320	520pcs	AC85-265V	<b>\$82.5</b>	<b>\$106.5</b>
LD-PL-30120-CL1-60W		60W	4800	560pcs	AC85-265V	<b>\$84.1</b>	<b>\$108.0</b>
LD-PL-30120-CL1-72W		72W	5760	704pcs	AC85-265V	<b>\$95.5</b>	<b>\$120.6</b>
LD-PL-60120-CL1-48W		48W	3840	462pcs	AC85-265V	<b>\$122.6</b>	<b>\$135.1</b>
LD-PL-60120-CL1-54W		54W	4320	520pcs	AC85-265V	<b>\$125.2</b>	<b>\$145.5</b>
LD-PL-60120-CL1-60W		60W	4800	560pcs	AC85-265V	<b>\$126.9</b>	<b>\$147.0</b>
LD-PL-60120-CL1-72W		72W	5760	704pcs	AC85-265V	<b>\$138.8</b>	<b>\$160.1</b>
LD-PL-6262-CL1-36W		36W	2880	352pcs	AC85-265V	<b>\$73.5</b>	<b>\$92.1</b>
LD-PL-6262-CL1-48W		48W	3840	462pcs	AC85-265V	<b>\$79.6</b>	<b>\$96.8</b>
LD-PL-6262-CL1-72W		72W	5760	704pcs	AC85-265V	<b>\$96.3</b>	<b>\$122.5</b>
LD-PL-3090-CL1-36W	295*895*10.5 (3090)	36W	2880	352pcs	AC85-265V	<b>\$74.0</b>	<b>\$86.8</b>

### Note:

- 1, Green table (" ") are normal prices, with AC85-265V input voltage.
- 2, Yellow table (" ") are dimmable prices, with 110V/220V±20V input voltage, including one dimmer and one remote controller. (like right side).
- 3, Above price are EX-Work price, delivery time: 7-12 days.
- 4, Payment term: TT/ Western Union in advance
- 5, Above Panel Light support to install as recessed, ceiling mounting and ceiling hanged like below:

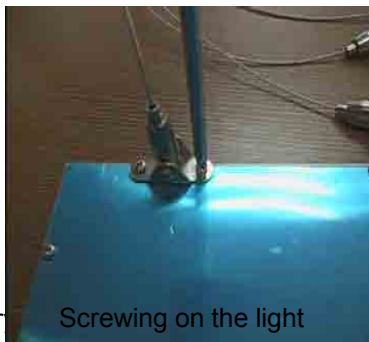


1set ( dimmer + remote controller)

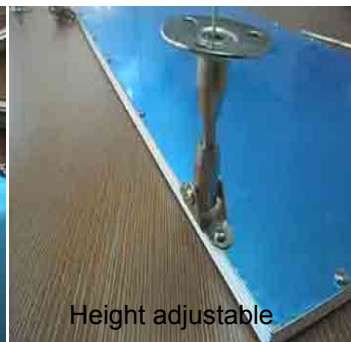
### Accessory Price:



ONE Meter Hanging accessory



Screwing on the light



Height adjustable

**3030/3060/3090/6060/6262 Panels use 4 pcs steel wire and price is \$4.0/set**

**30120/60120 Panels use 6 pcs steel wire and price is \$6.0/set**

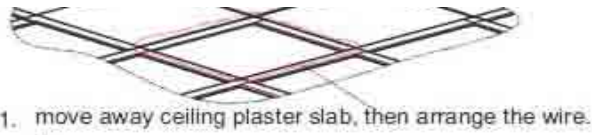
### Installation Guide:

schematic diagram for embedded installation

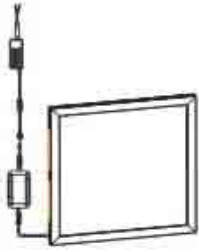


schematic diagram for hanging installation

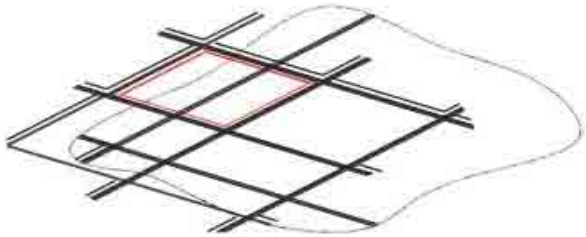




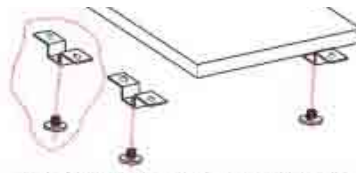
1. move away ceiling plaster slab, then arrange the wire.



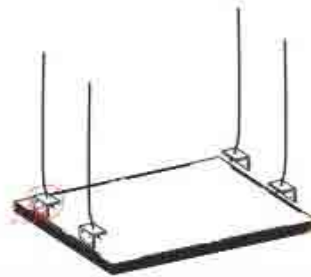
2. put through the panel light along ceiling's diagonal and then wiring.



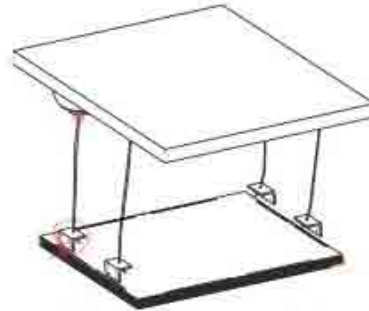
3. fix the panel light to suitable place



1. install the hanging fixed block in order.



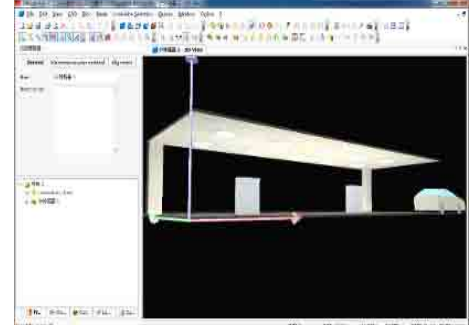
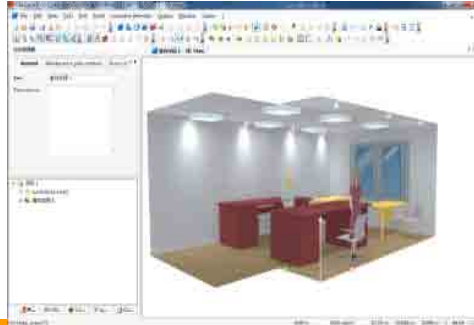
2. set up hanging fittings and stainless steel rope



3. fix the rope on suitable height by using lifter.

**Additional service**

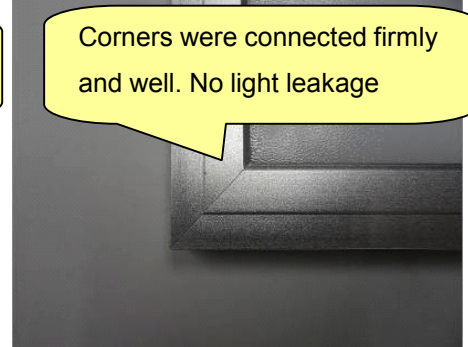
We can run Dialux program to design the lighting for the projects as client's requirement.



**Product features on production**



Light guide plate on the back



Corners were connected firmly and well. No light leakage

**Factory corner & Application:**

